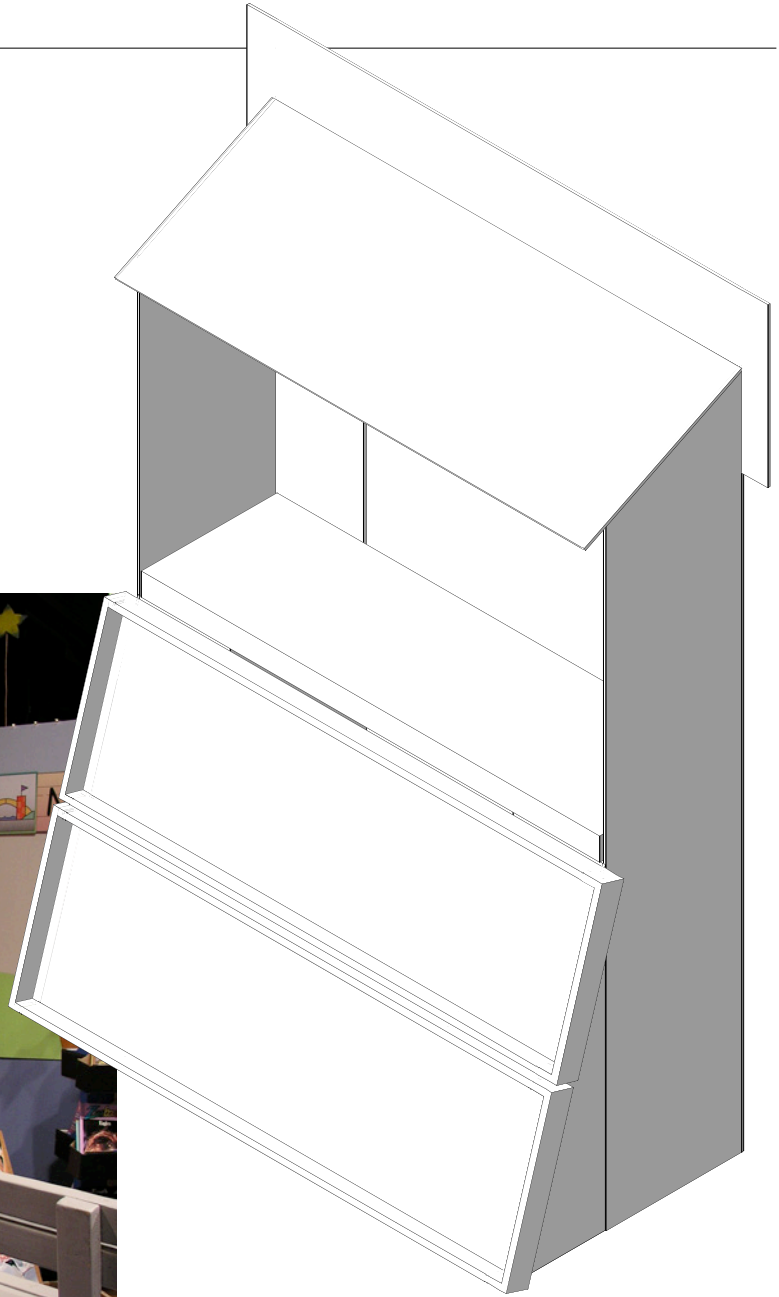
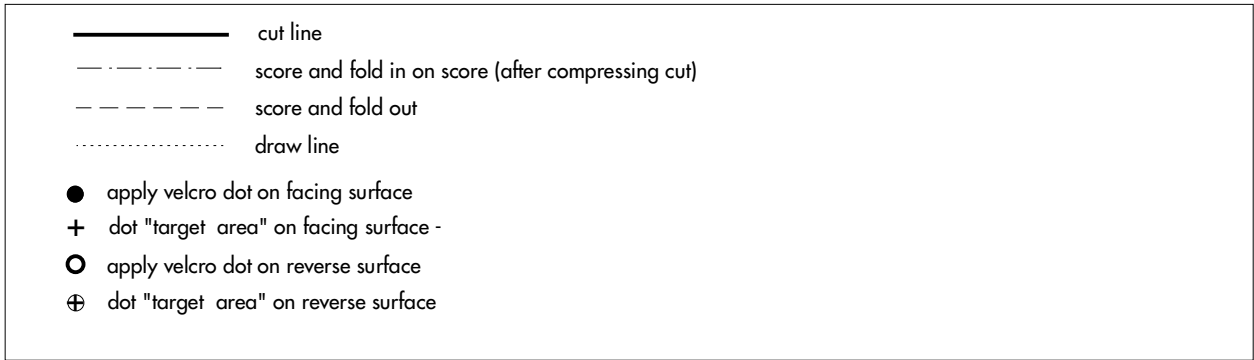


Newsstand

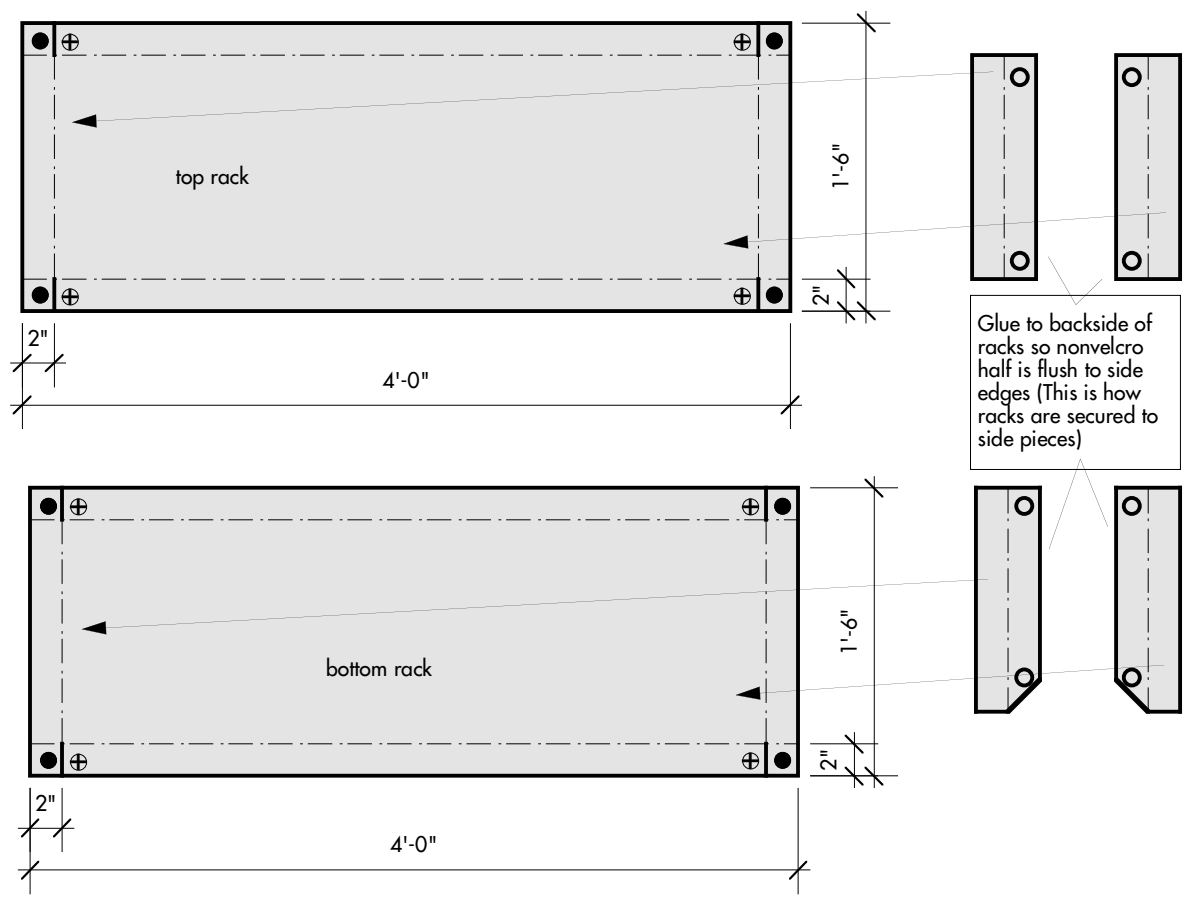




INSTRUCTIONS:
 Cut shapes as indicated out of corrugated cardboard (we have used sheets that are 50" x 104" in our layouts)
 Attach velcro dots (3/4" diameter works well) as indicated on the drawings ("Target area" symbols are for reference only)
 Assemble as indicated on the drawing above

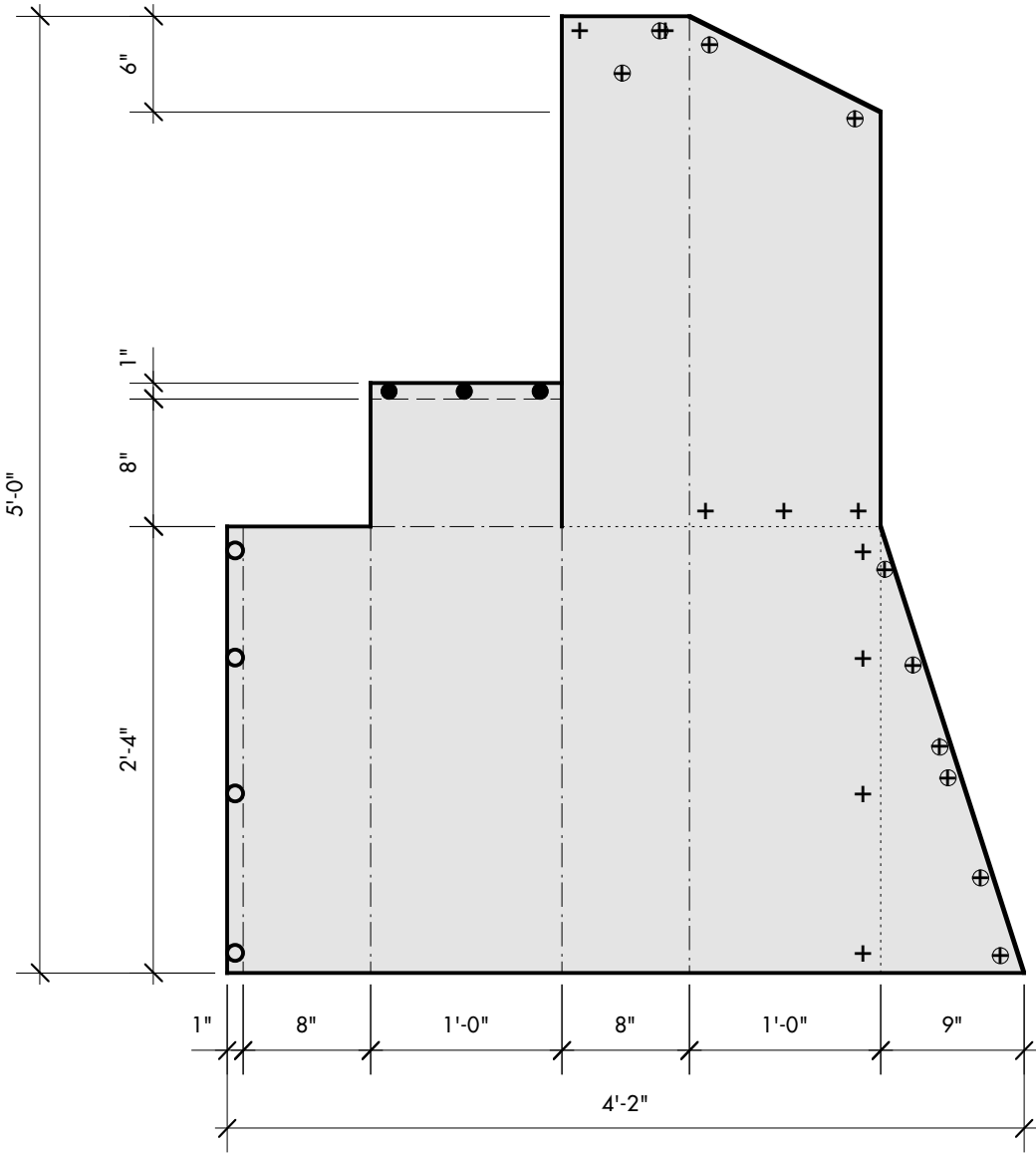
Racks (2) - visible face

scale: 1" = 1'0"



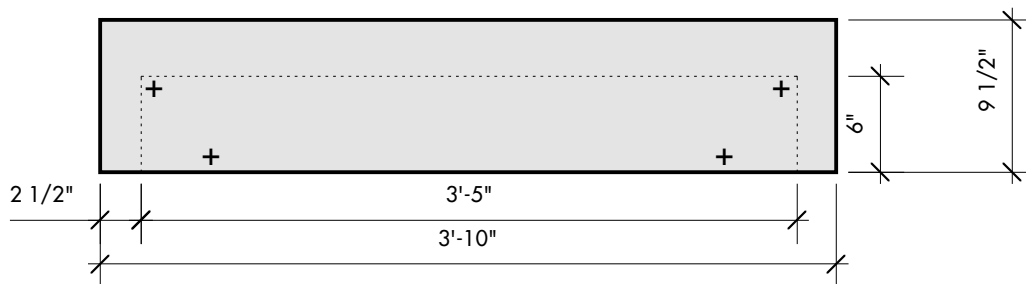
Side piece (right) - inside face

scale: 1" = 1'0"



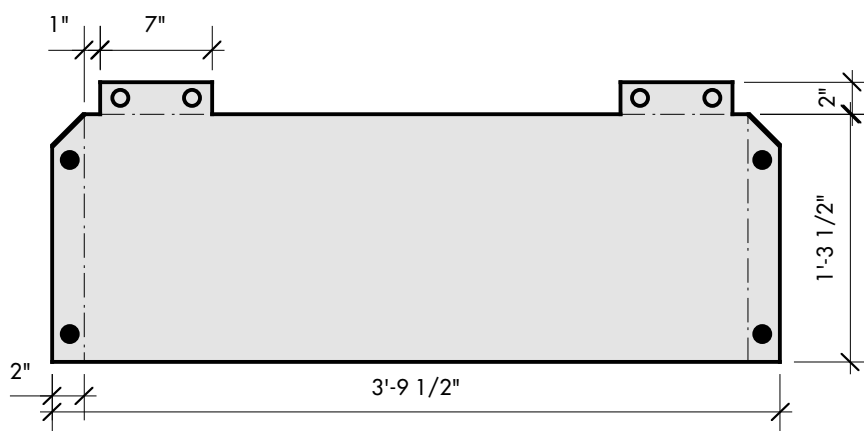
Header - visible face

scale: 1" = 1'0"



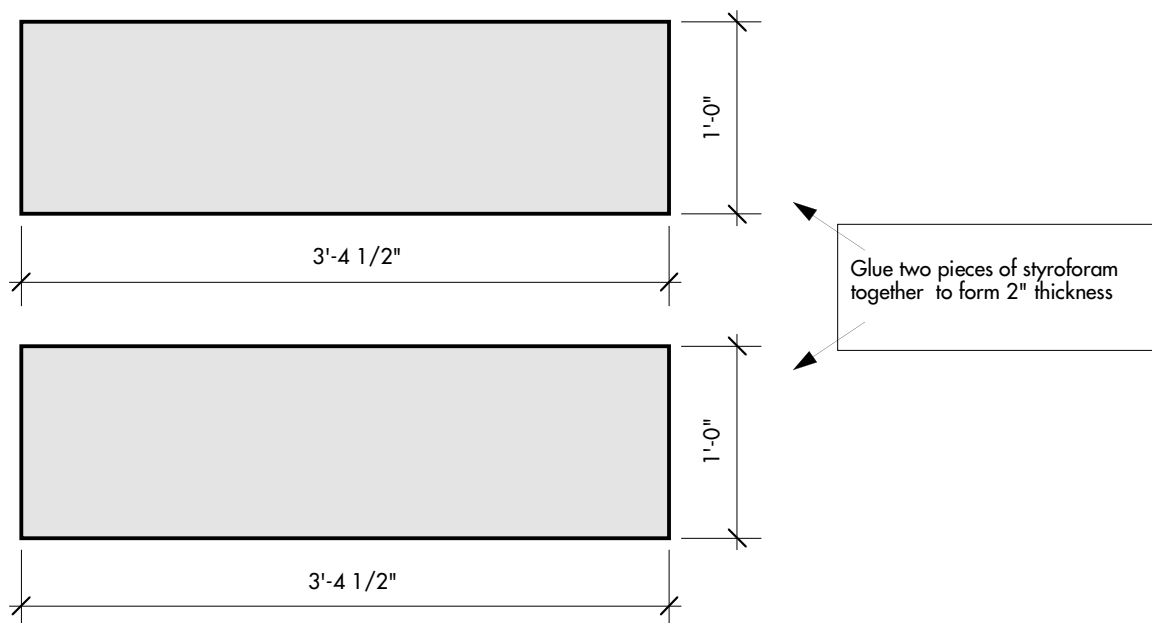
Canopy - visible face

scale: 1" = 1'0"



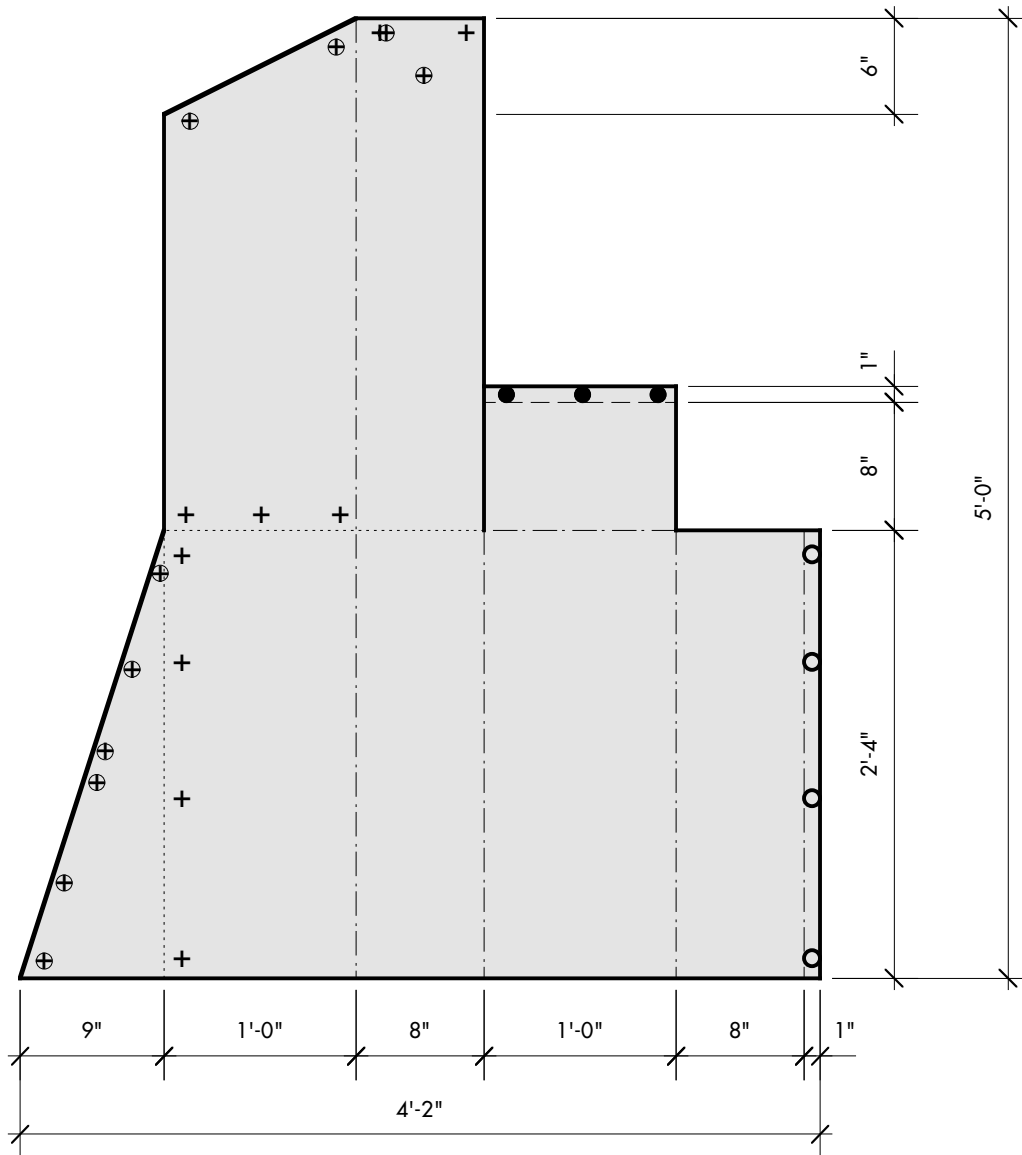
Shelf - (out of 1" styrofoam)

scale: 1" = 1'0"



Side piece (left) - inside face

scale: 1" = 1'0"



Layouts

scale: 3/4" = 1'0"

