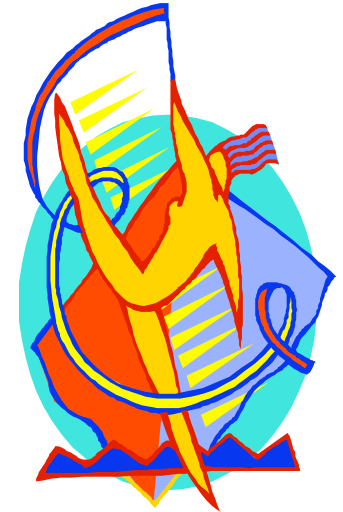


Inferring



Activity: Move to Infer

Purpose: To use dramatization to practice making inferences.

1. Begin this lesson with a discussion of movements present in all areas of life.
2. Teacher takes a [movement card](#) and dramatizes the movement on the card. (In the *Into the Book: Inferring* episode, Mrs. Pingel's dramatizes a cat!)
3. Students infer what the teacher is acting out.
4. Teacher asks students what clues helped them make their inferences.
5. Give your students the opportunity to select a movement card and dramatize the movement for their classmates. Remember, students must share what clues helped them make their inference.
6. Ask your students to create their own movement cards to add to the classroom deck!



Movement Cards

 Getting a vaccination	 Bunny hopping
 Mowing the lawn	 Police directing traffic
 Tourist	 Catching a fish
 Hula hooping	 Riding a roller coaster
 On a balance beam	 Carpenter hammering
 Having a nightmare	 Driving a car
 Wedding	 Catching a fly ball
 Lifting Weights	 Ice skating